

Leroy

ENGINEERING

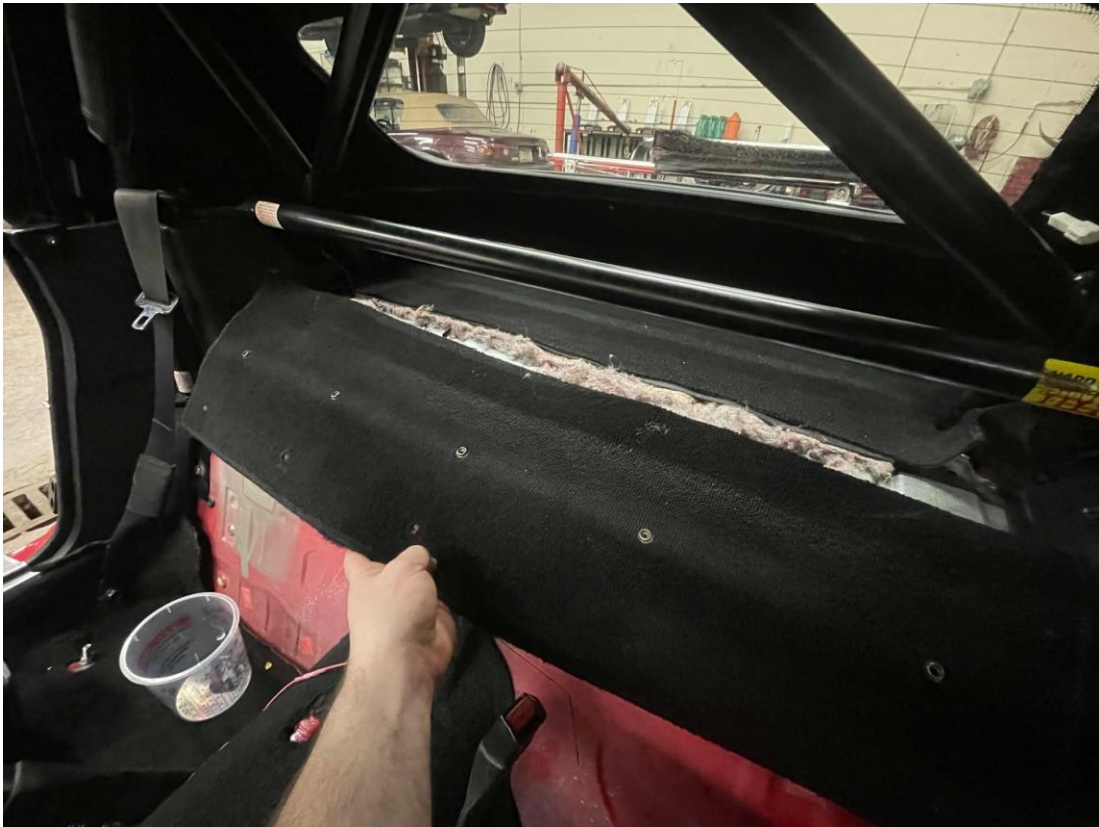
LMS-094 Stage 2 Sound System Installation Instructions

Congratulations on your new LE Stage 2 sound system!

Needed Tools

- Knife
- 10mm socket
- Philips screwdriver
- Side cutters
- Wire crimps
- Wire strippers
- 3mm hex key
- 4mm hex key

With a knife, or shears, cut 10" off the upper parcel shelf carpet. Cut and remove the carpet, padding and foam underneath. The cut will align with the back of the plastic B pillar cover as shown.





Unbolt and remove the plastic B-pillar covers, and the metal parcel shelf panel.



Cut 4" off the lower ledge off the B-pillar plastic trim pieces. A Dremel or reciprocating saw works well. See pictures for where to cut. Once trimmed down, **reinstall the panels**.



Re-install the B-pillar plastics. It should look like the below picture.



Install the 6mm Panel nut over this hole as shown.

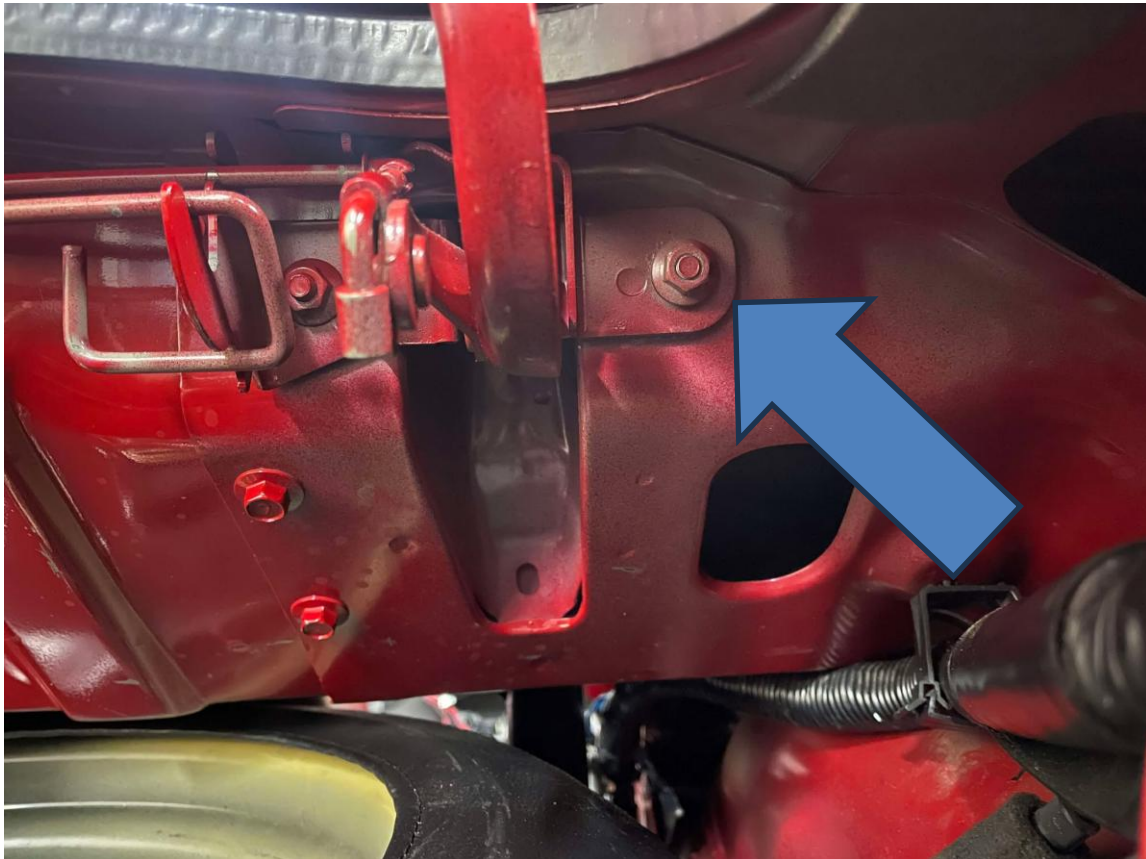


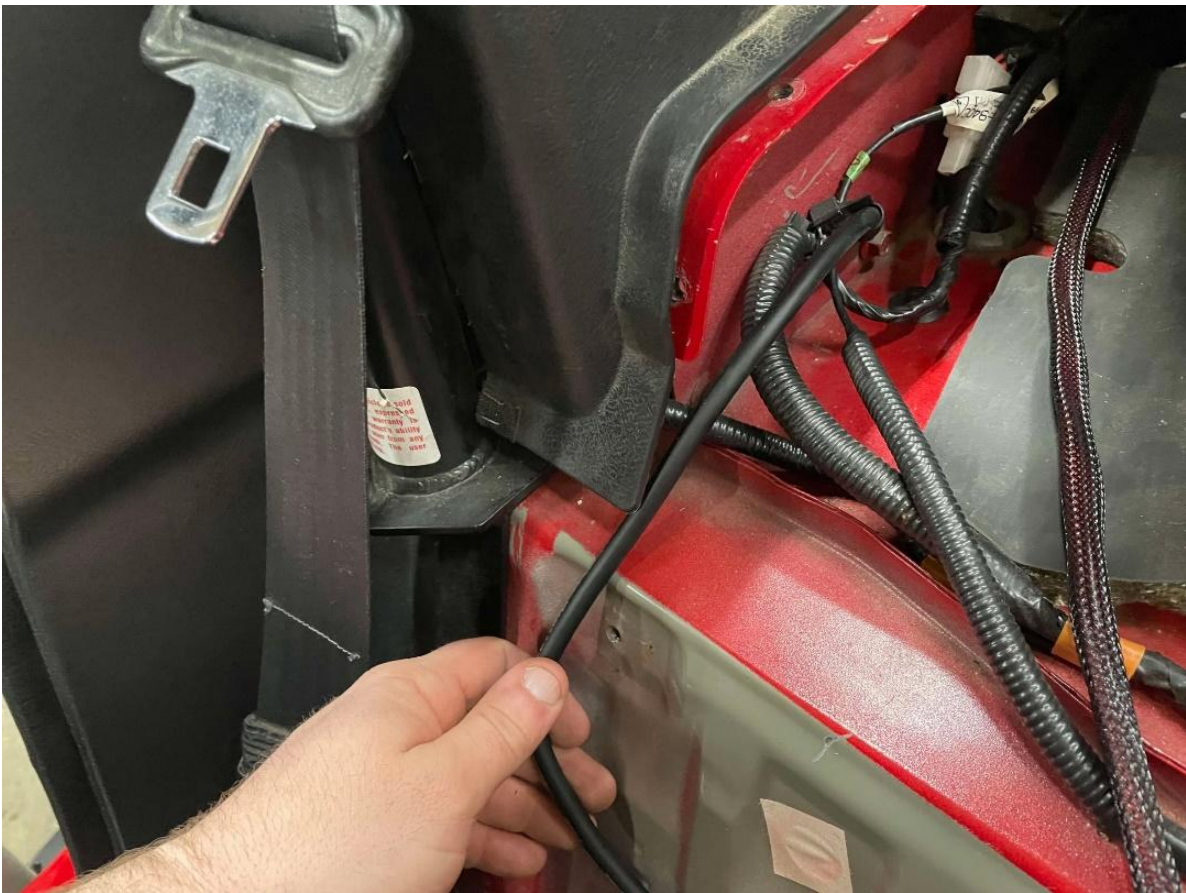
Locate the Power cable harness.



In the trunk, remove the right trunk lid mounting nut. Feed the power cable through from the trunk into the cabin as shown. Once it is fed through, mount the fuse block to the trunk hinge mounting bolt, and reinstall the nut.

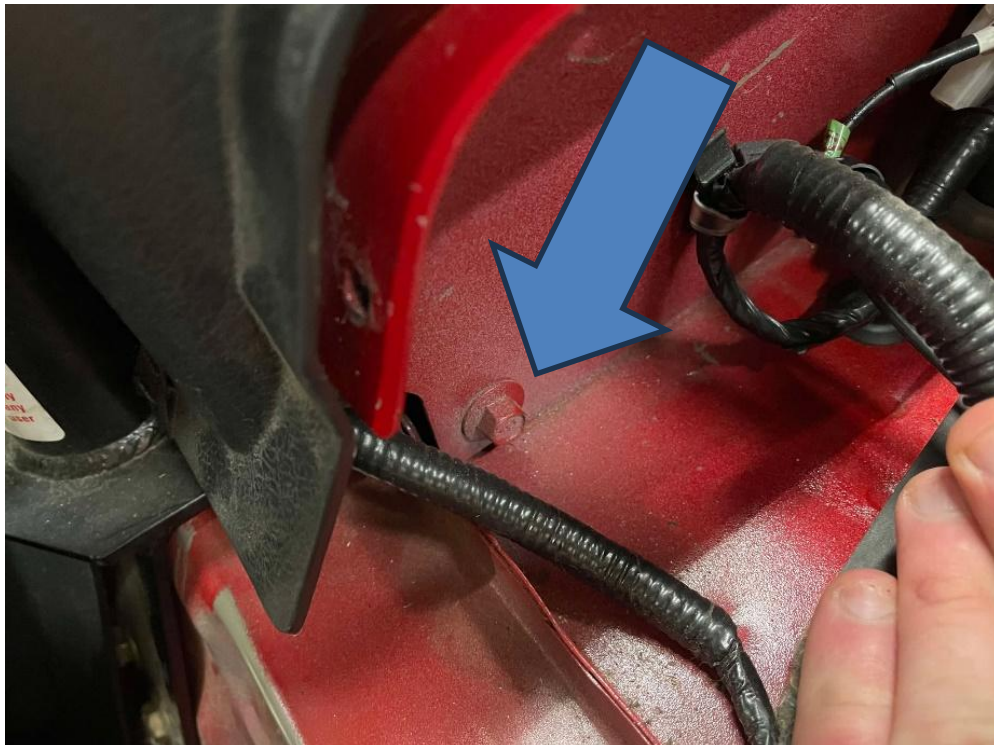
DO NOT hook the cable up to the battery at this time.





Locate the ground cable.

Bolt the cable to any solid ground point behind the parcel shelf. On NB chassis, there's a easy to locate existing ground. On NA cars, certain years do not have this ground point, but any of the chassis bolts will work.



Position both the ground and power wires to the far left, under the B-pillar plastic.



Unbox the speaker panel.



Install the panel into the car. This can be done solo, but it's easier with 2 people. Ensure the speaker wires are positioned as shown, and not caught under the panel.



Lift the carpet, and install the two rear mounting screws. **DO NOT** tighten, just install a couple of turns.



For 90-93, and 99-05 cars, install the **RIGHT** two lower mounting screws. **DO NOT** tighten, install a couple of turns.

For 94-97 cars, install the **LEFT** two lower mounting screws. **DO NOT** tighten, install a couple of turns.



Locate the amp and mounting bracket assembly. Mount to the car via the two remaining lower panel mounting bolts. For 90-93 and 99-05 cars, this will be on the PASS side, for 94-97 cars, it will mount on the DRIVER side.



Tighten all 6 panel mounting screws. Ensure they are snug, but do not over-tighten and crush the rubber grommets.

Route the power and ground cables to the amp, and zip-tie in place as shown.



NOTE: for 94-97 cars, the power and ground cable routing may need to be adjusted.

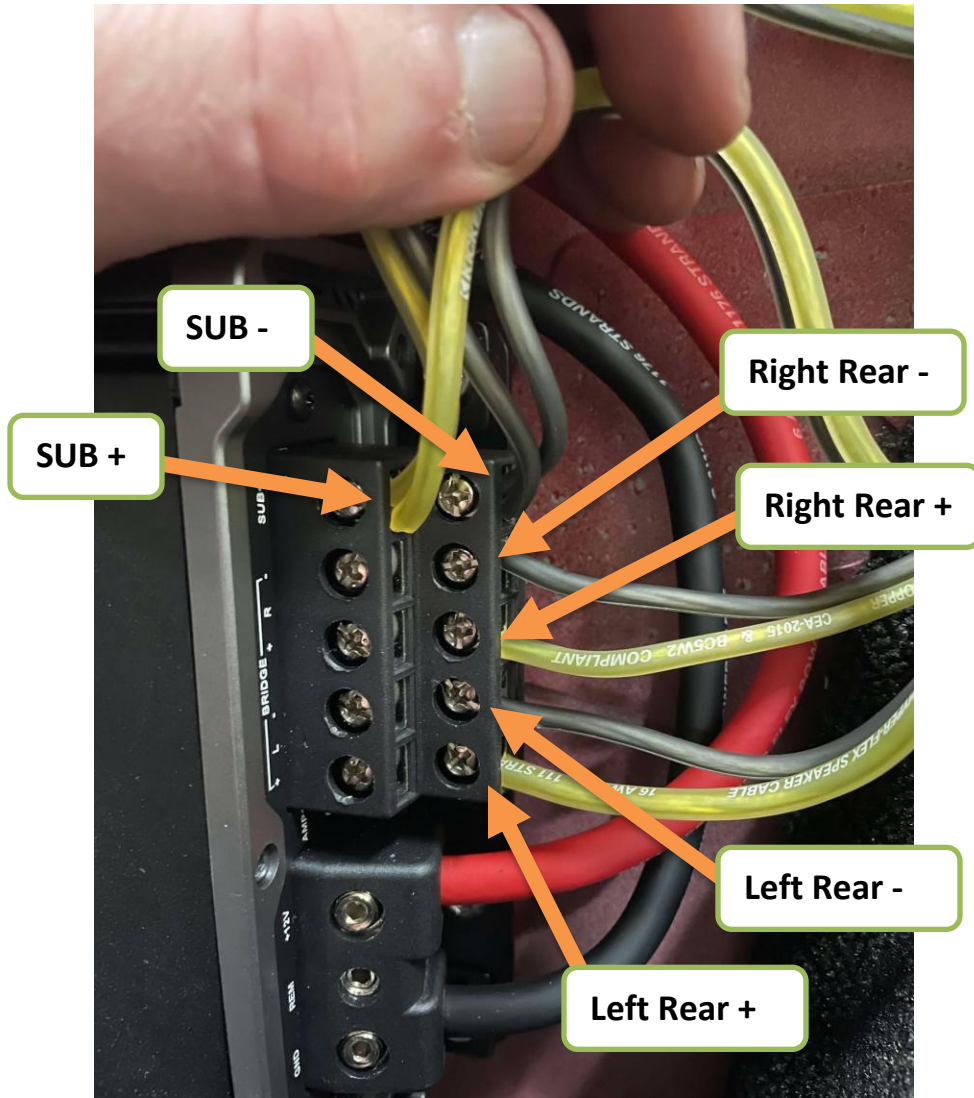


Route the speaker wires down the center of the car.

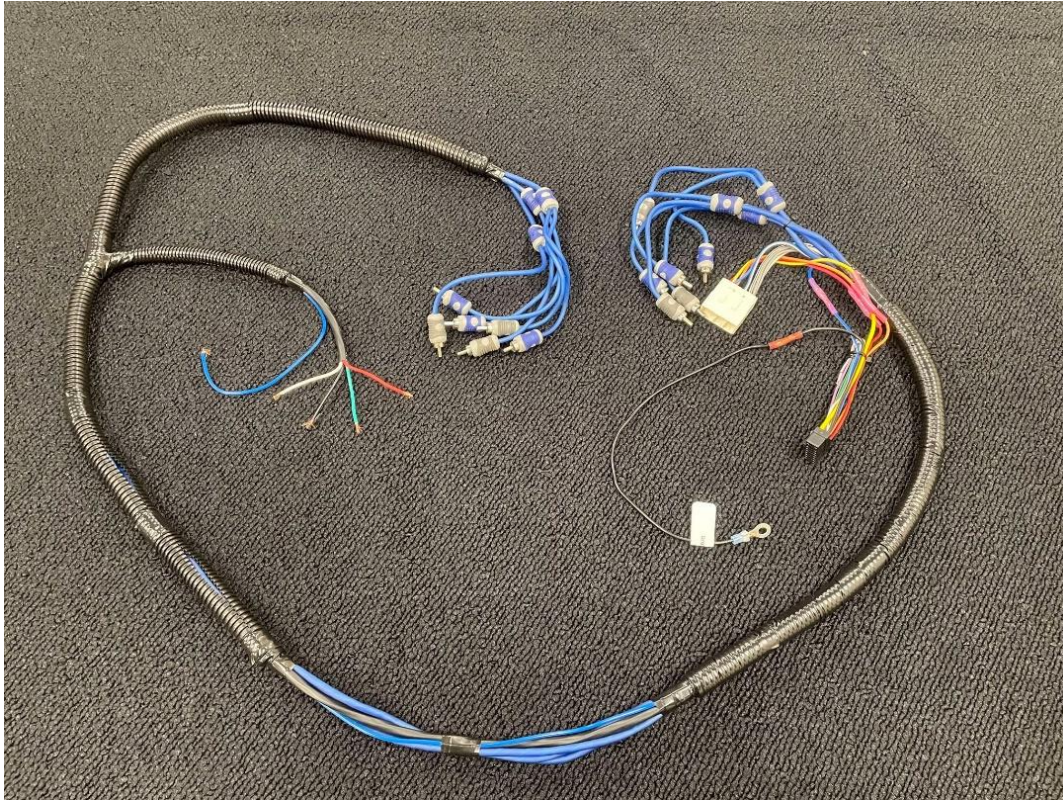


Twist the SUB wires together Positive to Positive, and Negative to Negative, and connect to the amp. Match the speaker wires to the corresponding ports on the sub.





Locate the radio harness.



Remove the head unit, and clear out any unused wiring.



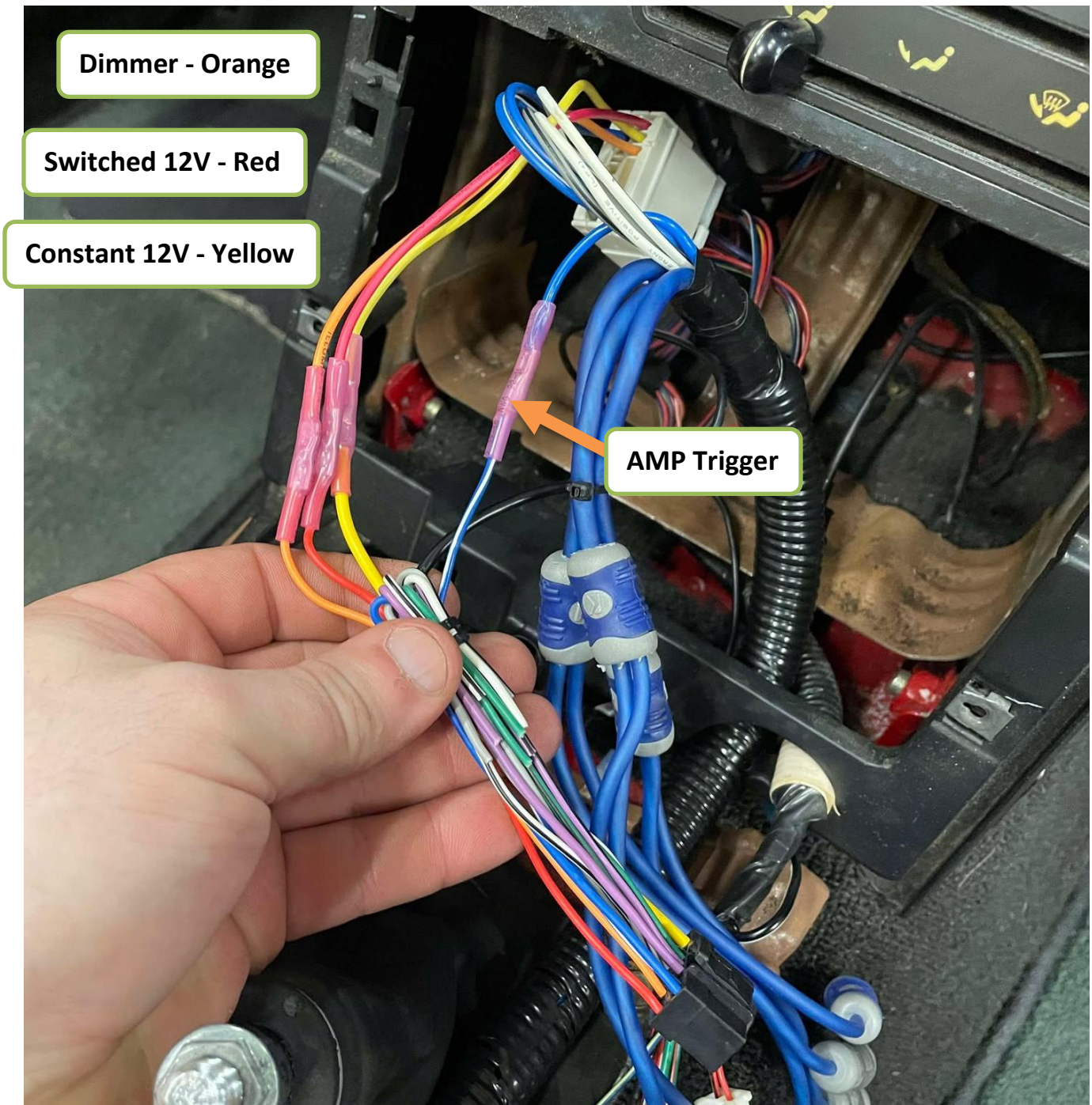
Feed the harness through as shown. For NA's, feed the wire through the notch in the plastic as shown below. For NB's, fish the harness over the HVAC unit, then around back and under. If needed, remove the HVAC controls to gain better access.



Once the harness is pulled through, connect the plug to the car's OEM harness.



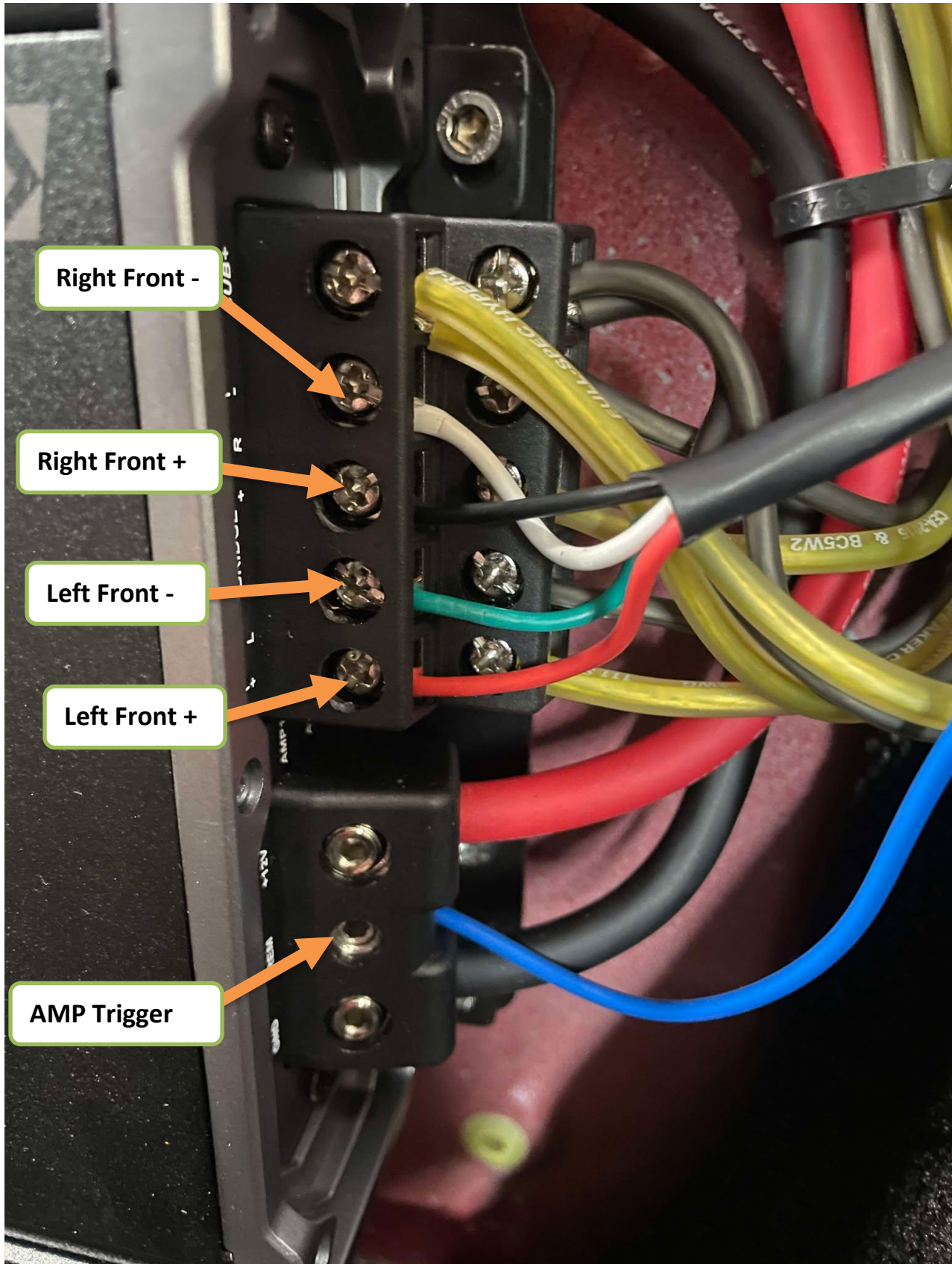
Using the included crimp connectors, connect your radio harness. Mount the dimmer, constant 12v ,and switched 12V wires. Also connect the amp trigger wire.



Plug in the 3 pairs of RCA cables.







Plug in the RCA plugs to the corresponding sockets. Zip tie the harness in place as shown.



Install the center armrest. Tuck the harness up under the armrest along the passenger side. Ensure the harness is not pinched.







Each head unit has different output levels, and EQ controls, so you will need to adjust your amp settings accordingly. Below is a good starting point. Start with your head unit volume settings at 0 (no base boost or amplification). Adjust as needed to achieve the designed volume and sound. Contact us if you need further help tuning the system.

Amp Start-up settings

Fader: OFF

Input Level: LO

Sub Input: SUB

AMP1

Gain: 50% (12:00 position)

X-Over: 75% (3:00 position)

AMP2

Gain: 50% (12:00 position)

X-Over: 75% (3:00 position)

SUB

Gain: 75% (3:00 position)

X-Over: 75% (3:00 position)

Bass Boost: 0%