

90-05 Miata Stage 1 Sound System

Installation Instructions

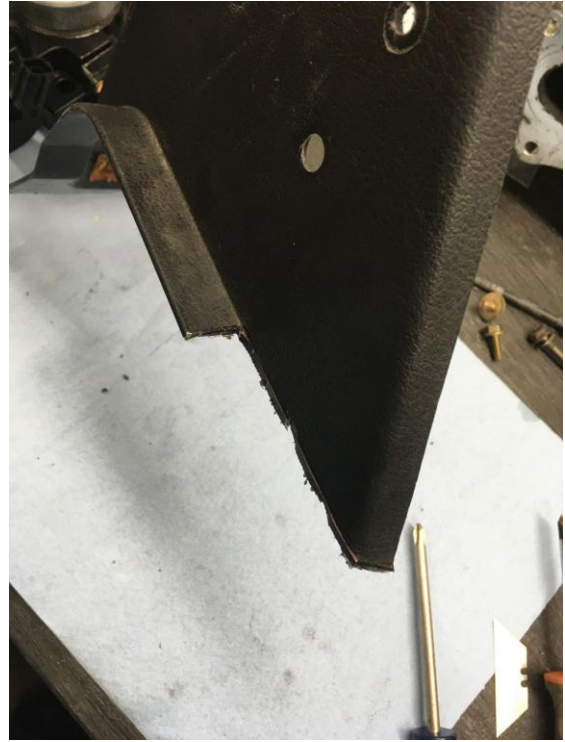
1. First step is to remove the factory parcel shelf. To do so, either remove the seats, or at least slide them all the way forward. Remove the carpet from the shelf, as well as the vertical piece that's behind the seats.
2. Next remove the two plastic trim pieces from both seat belt towers. If you have a roll bar installed, these pieces may already be missing, or modified.
3. Next remove the M6 bolts holding the parcel shelf in place. Remove the tray. Your car should now look like this.



4. The panel mounts in with 4 bolts along the front bottom, and two on the top. The front bolt thread into the existing threaded holes that the parcel shelf used to use. The rear bolts require clip nuts as shown.



5. Before the panel is installed, you'll need to cut the lower ledge off the plastic trim pieces. A dremel or reciprocating saw works well. See pictures for where to cut. Once trimmed down, reinstall the panels.



6. Run the 12V power supply wire from the battery to the amp location. Be sure to have the battery disconnected during this step. Mount the supplied fuse holder to the rear firewall behind the passenger seat. The amp will get mounted directly below this. It's a good idea to mock everything up and measure wire lengths before cutting.



7. The Ground wire can be cut and mounted with the pre-existing 6mm threaded hole in the firewall as shown.



8. You will need the following wires coming from the head unit.
- a. Amp trigger wire
 - b. Left and right rear speakers
 - c. Pre-amp coax outputs

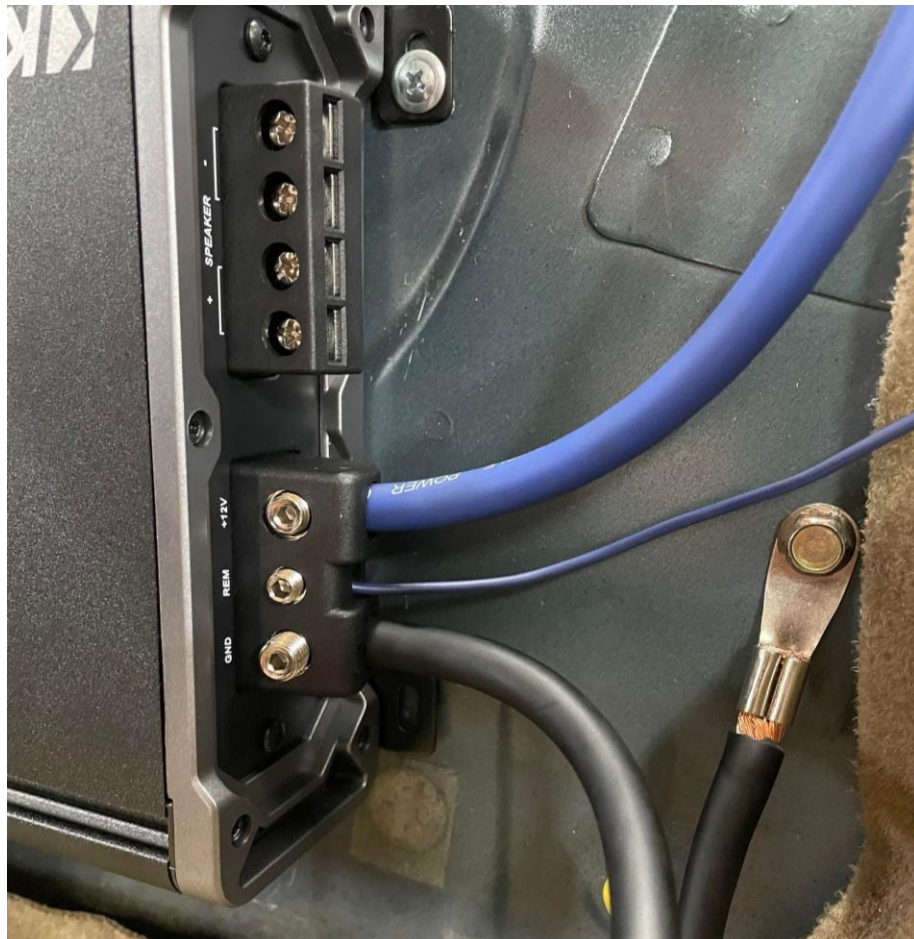
Run the wires from the head unit, under the center arm-rest to the amp location. For ease of routing, we sometimes run them through the holes in the carpet as shown.



9. Next mount the amp using some self-tapping screws. We find it easiest to hold the amp in place, mark the hole locations and drill a pilot hole.



10. The power, ground and radio trigger wire are connected as shown.



11. Plug in the pre-amp outputs, making sure to pay attention to polarity.

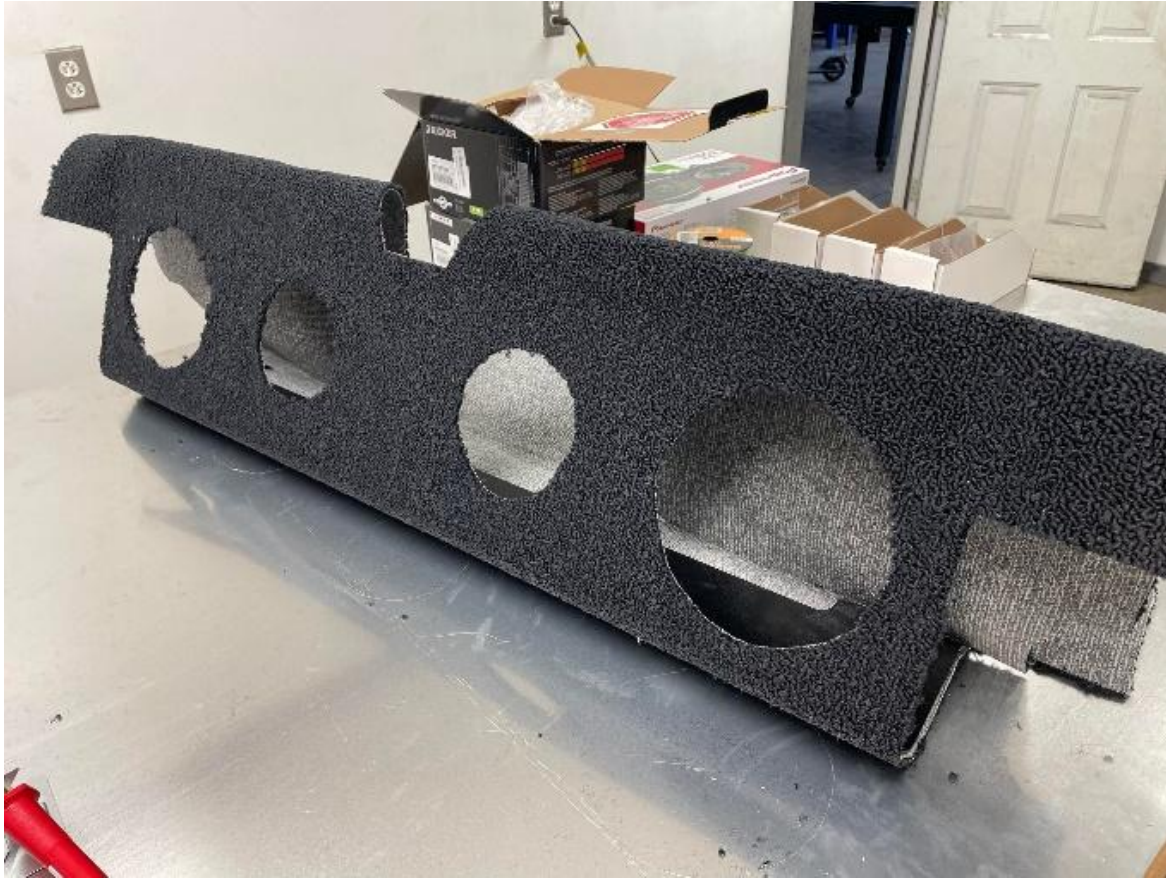


12. Glue the fabric onto the panel. A spray adhesive is recommended. Position the material such that the edge of the side cutout is 4.25" from the bottom of the panel as shown.





13. Cut out the speaker holes. Also cut out the mounting screw holes. It is recommended to melt the holes with a soldering iron or hot poker, as it prevents the carpet from fraying.

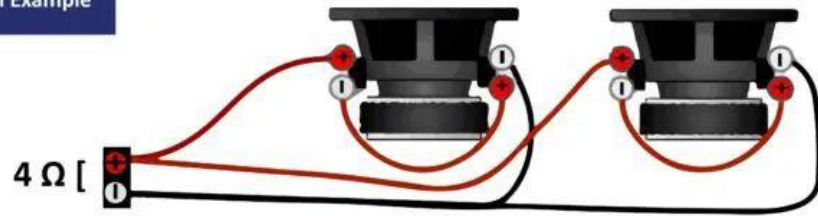


14. Mount the speakers into the panel.



15. Wire the subs in Series-Parallel as shown.

Dual Voice Coil Subwoofer Series-Parallel Example



16. Install the panel into the car. Ensure the wires are run such that they reach the amp. Not the location in the picture below.



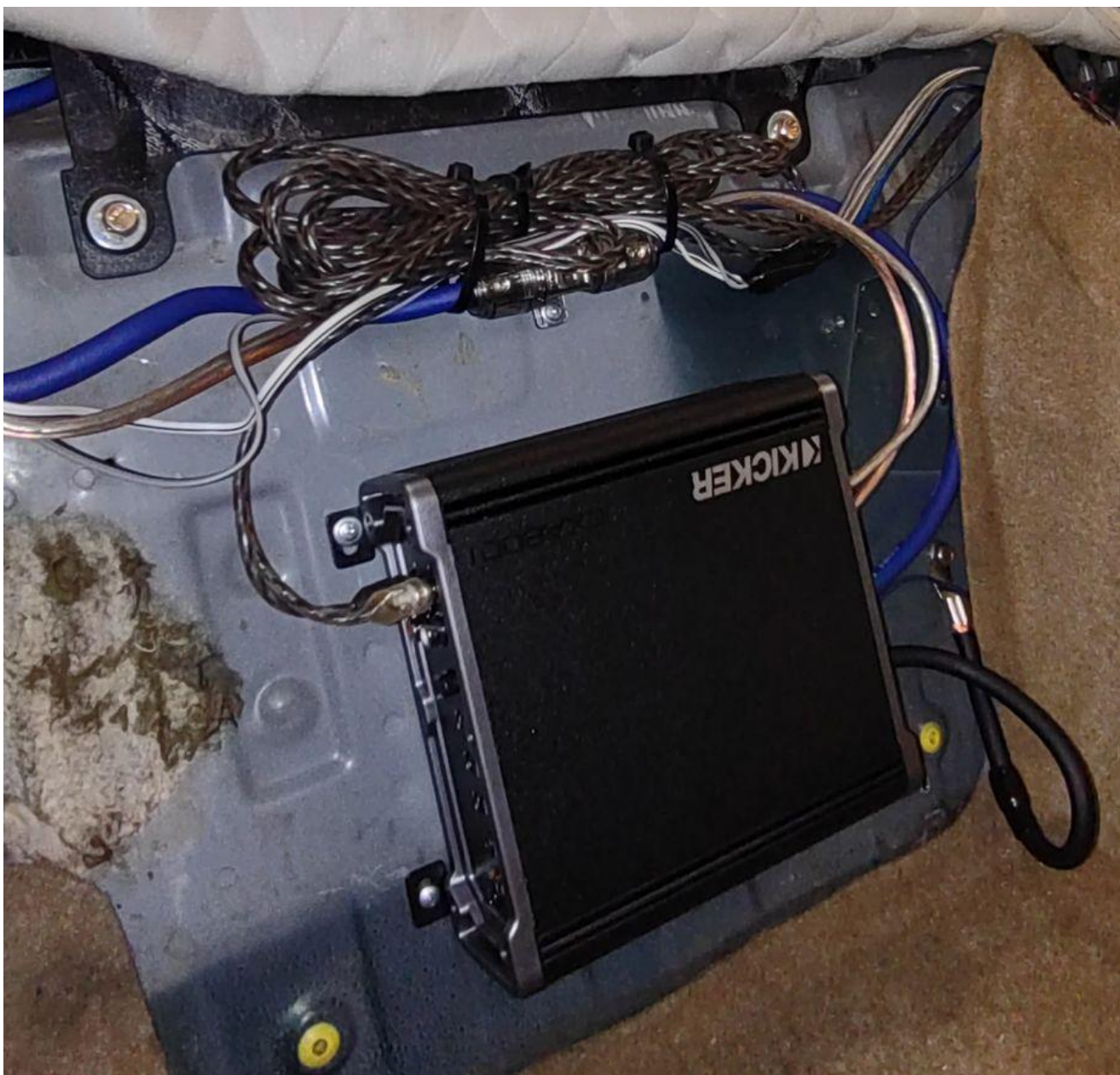
17. The panel is mounted with QTY 6 M6 screws with washers.



18. Once mounted, run the two 12 GA speaker wires for the subs to the amp. The white (or black) wire is negative, the red/gold wire is positive.



19. Connect the rear speaker wires and zip tie everything up above the amp as shown.



20. Reinstall the parcel shelf carpet. Cut about 12" off the bottom edge such that the carpet meet the rear edge of the speaker box.



21. Lay the speaker panel carpet down, and Velcro it to the OEM parcel shelf carpet.

