

Leroy Engineering Nissan Xterra (05-15) and plastic bumper Frontier (05-19) front winch mount



Package contents:

- QTY: 1 - Winch mount
- QTY: 8 – 12 x 1.25mm bolts
- QTY:8 – 12mm washers

Note: The factory Nissan front brush guard will NOT fit with the Leroy Engineering winch mount. If you wish to reuse the factory metal brush guard, some minor drilling/cutting will be required. During the install process, if you have any issues, please call Leroy Engineering 440-596-3066

Step 1: Remove bumper cover

- Begin by opening the hood and removing the 4 outside plastic body clips on the top edge of the grill. Leave the inside two attached, these will be removed last.



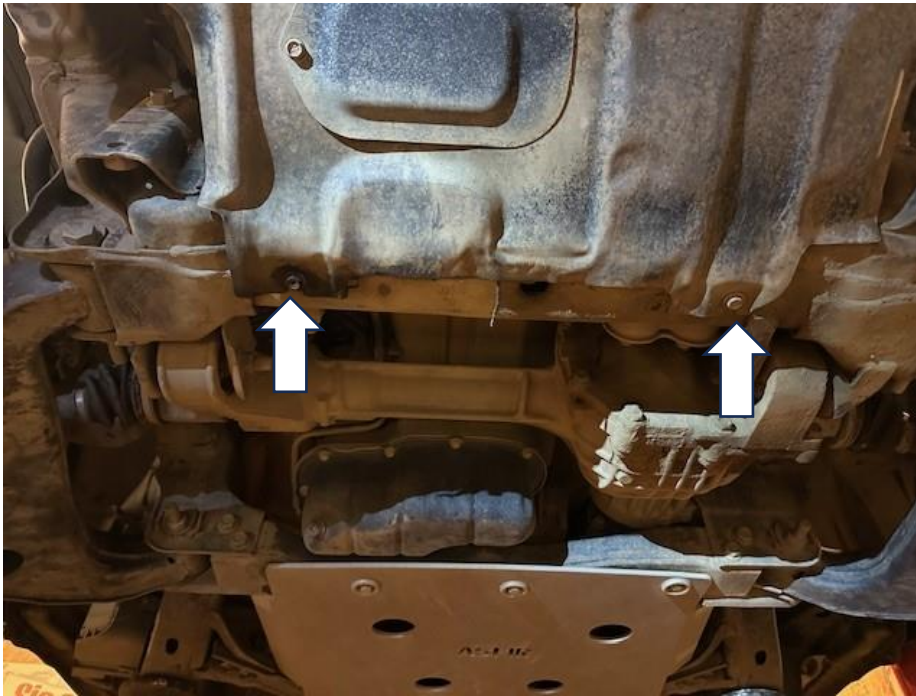
- Remove the plastic body clips attaching each fender liner to the bumper cover. It may be helpful to remove the front wheels to allow full access to the hardware.
- Remove the two Philips head screws on the upper, outside corners of the bumper cover that fasten it to the front fenders.



- Remove the bolts holding the factory front brush guard to the lower lip of the bumper cover.



- Remove the two bottom screws fastening the factory brush guard to the vehicle frame and set the brush guard aside.



- If vehicle is equipped, unplug the fog lights that are mounted to the bumper cover.
- Finally, remove the remaining two plastic body clips from the top of the grill and pull the bumper cover off and set aside.



-

Step 2: Remove the factory steel bumper

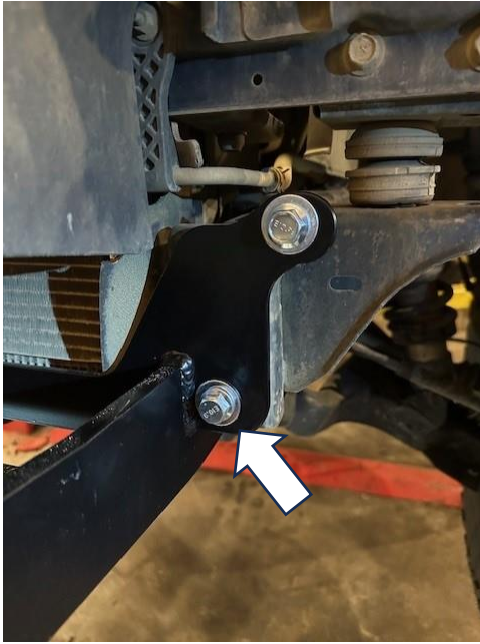
- Using a 17mm socket, remove the four 12mm bolts fastening the bumper to the frame and set bumper aside.

**Step 3: Attach winch mount**

- ***Note: it is recommended that a second person helps hold the winch mount in place while putting the first two bolts in place.**
- Using the supplied hardware, hold the winch mount up to the front frame rails and loosely thread two 12mm bolts into the top, front threaded holes.



- Loosely thread two more 12mm bolts into the front lower threaded holes.



- Loosely thread in the remaining four 12mm bolts into the 4 lower frame threaded holes
it may be required to tighten the front lower bolts to pull the mount back to line up the bottom vertical bolts
- Once all the bolts are in place, tighten all 8 bolts and make sure winch mount is sitting flush to the frame.



- Torque the eight mounting bolts to 60 ft/lbs.

Step 4: Mounting the winch

- Set the winch in the winch mount ***** Be careful not to bump or damage the front airbag sensor*****
- Following your winch manufacturers' instructions, bolt the winch to the mount and run the wiring up towards the battery.



- ***** Make sure winch or winch controller is not contacting the airbag sensor. Failure to complete this step can cause serious injury*****

Step 5: Trim bumper cover

- Using a saw, cut-off wheel or hot knife, carefully trim off the lower lip of the bumper cover to allow the cover to sit over the winch mount. *Reminder, you can always trim a little more off, you cannot always put it back on*

Step 6: Reattach bumper cover

- Carefully lift the bumper cover over the winch and set in place, using two plastic body clips to hold it in place.
- Reinstall factory bumper cover hardware.